

# Quantity calculator

**STEP 1**  
Use the "Room dimensions grid" on the right to find the ceiling's dimensions. If the exact dimensions are not listed, use the next largest numbers.

**STEP 2**  
Use this result from the "Room dimensions grid" (step 1) to find the corresponding number in the left column of the "Quantity table" for the various quantities you will need for your ceiling.

## STEP 2 Quantity table

Result Grid	Ft <sup>2</sup>	2'x2' Panels	Main crossbar	Secondary crossbar	Rails	Anchoring
1	6	1	1	2	5	5
2	11	2	2	3	9	9
3	16	3	2	4	9	9
4	22	4	3	5	14	14
5	27	5	3	6	14	14
6	32	6	4	7	18	18
7	37	7	4	8	18	18
8	42	8	5	9	23	23
9	48	9	5	10	23	23
10	53	10	6	11	27	27
11	59	11	7	12	32	32
12	64	12	7	13	32	32
13	69	13	8	14	36	36
14	74	14	8	15	36	36
15	21	4	2	6	9	9
16	31	6	3	8	14	14
17	41	8	4	10	18	18
18	51	10	5	12	23	23
19	61	12	5	14	23	19
20	71	14	6	16	27	20
21	81	16	7	18	32	21
22	91	18	8	20	36	22
23	101	20	9	22	41	41
24	111	22	10	24	45	45
25	121	24	10	26	45	45
26	131	26	11	28	50	50
27	141	32	12	30	54	54
28	46	9	4	12	18	18
29	60	12	5	15	23	23
30	75	15	6	18	27	27
31	89	18	7	21	32	32
32	104	21	8	24	36	36
33	119	24	9	27	41	41
34	133	27	10	30	45	45
35	149	30	11	33	50	50

Result Grid	Ft <sup>2</sup>	2'x2' Panels	Main crossbar	Secondary crossbar	Rails	Anchoring
36	164	33	13	36	59	59
37	178	36	14	39	63	63
38	193	39	15	42	68	68
39	208	42	16	45	72	72
40	80	16	6	20	27	27
41	99	20	7	24	32	32
42	118	24	9	28	41	41
43	137	28	10	32	45	45
44	157	32	12	36	54	54
45	176	36	13	40	59	59
46	197	40	14	44	63	63
47	216	44	16	48	72	72
48	236	48	17	52	77	77
49	255	52	18	56	81	81
50	274	56	20	60	90	90
51	123	25	9	30	41	41
52	147	30	10	35	45	45
53	171	35	12	40	54	54
54	195	40	14	45	63	63
55	219	45	15	50	68	68
56	245	50	17	55	77	77
57	269	55	19	60	86	86
58	293	60	20	65	90	90
59	317	65	22	70	99	99
60	341	70	23	75	104	104
61	176	36	12	42	54	54
62	204	42	14	48	63	63
63	233	48	16	54	72	72
64	262	54	18	60	81	81
65	293	60	20	66	90	90
66	321	66	22	72	99	99
67	350	72	24	78	108	108
68	379	78	25	84	113	113
69	407	84	27	90	122	122
70	238	49	16	56	72	72

Result Grid	Ft <sup>2</sup>	2'x2' Panels	Main crossbar	Secondary crossbar	Rails	Anchoring
71	271	56	18	63	81	81
72	304	63	20	70	90	90
73	340	70	22	77	99	99
74	374	77	25	84	113	113
75	407	84	27	91	122	122
76	441	91	29	98	131	131
77	474	98	31	105	140	140
78	309	64	20	72	90	90
79	347	72	23	80	104	104
80	388	80	25	88	113	113
81	426	88	28	99	126	126
82	464	96	30	104	135	135
83	503	104	33	112	149	149
84	541	112	35	120	158	158
85	390	81	25	90	113	113
86	436	90	28	99	126	126
87	479	99	31	108	140	140
88	522	108	33	117	149	149
89	565	117	36	126	162	162
90	607	126	39	135	176	176
91	488	100	31	110	140	140
92	536	110	34	120	153	153
93	583	120	37	130	167	167
94	631	130	40	140	180	180
95	679	140	43	150	194	194
96	588	121	37	132	167	167
97	641	132	40	143	180	180
98	693	143	43	154	194	194
99	746	154	46	165	207	207
100	698	144	43	156	194	194
101	755	156	47	168	212	212
102	812	168	50	180	225	225
103	817	169	50	182	225	225
104	879	182	54	195	243	243
105	946	196	58	210	261	261

**STEP 1 Room dimensions grid**

Smallest dimensions	1	2	3	4	5	6	7	8	9	10	11	12	13	14	Largest dimensions			
from 28' 5" to 30' 7"														105				
from 26' 3" to 28' 5"													103	104				
from 24' 1" to 26' 3"													100	101	102			
from 21' 11" to 24' 1"											96	97	98	99				
from 19' 9" to 21' 11"										91	92	93	94	95				
from 17' 7" to 19' 9"										85	86	87	88	89	90			
from 15' 5" to 17' 7"									78	79	80	81	82	83	84			
from 13' 3" to 15' 5"									70	71	72	73	74	75	76	77		
from 11' 1" to 13' 3"							61	62	63	64	65	66	67	68	69			
from 8' 11" to 11' 1"							51	52	53	54	55	56	57	58	59	60		
from 6' 9" to 8' 11"						40	41	42	43	44	45	46	47	48	49	50		
from 4' 7" to 6' 9"						28	29	30	31	32	33	34	35	36	37	38	39	
from 2' 5" to 4' 7"						15	16	17	18	19	20	21	22	23	24	25	26	27
from 0" to 2' 5"	1	2	3	4	5	6	7	8	9	10	11	12	13	14				
from 2' 5" to 4' 7"		from 2' 5" to 4' 7"	from 4' 7" to 6' 9"	from 6' 9" to 8' 11"	from 8' 11" to 11' 1"	from 11' 1" to 13' 3"	from 13' 3" to 15' 5"	from 15' 5" to 17' 7"	from 17' 7" to 19' 9"	from 19' 9" to 21' 11"	from 21' 11" to 24' 1"	from 24' 1" to 26' 3"	from 26' 3" to 28' 5"	from 28' 5" to 30' 7"				

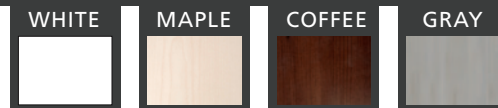
This table is intended as a guideline only. actual quantities required may vary slightly.



Embassy ceiling is an ingenious suspended ceiling concept in a contemporary style. Its sleek and durable design suits any type of décor and will age gracefully over time. Get an upscale ceiling look at an affordable price!

- Contemporary design
- Quick and easy installation
- Sturdy, durable laminated panels
- No visible nails or screws
- Available in 4 popular colours\*
- Low maintenance
- Innovative installation system
- Only 1-3/4" clearance between the structure and the ceiling

Patent pending - Made in Canada 🇨🇦



\*Available colours may vary by store.



# Installation Guide

## Important!

Before installing the panels and crossbars, open the boxes and allow the material to acclimatize to the room for 48 hours.



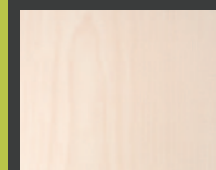
Download the Embassy mobile app. Tells you everything you need to know to properly plan and install your ceiling!

## Our Products

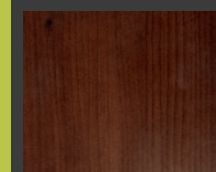
WHITE



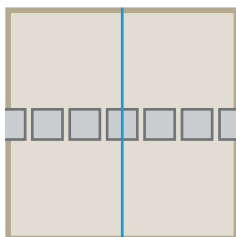
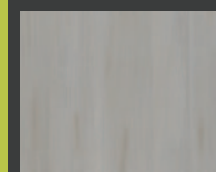
MAPLE



COFFEE



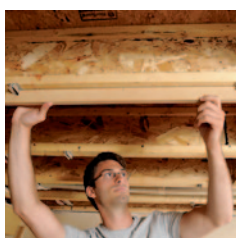
GRAY



### 1. PREPARE THE INSTALLATION

Locate the centre of the ceiling space to be covered and use a chalk line to draw the room's centre line. Note that the main crossbars (fig. D) must be installed in the opposite direction of the joists.

Next, visualize how the panels will be placed by arranging them on the floor, leaving about a 2" space between them. Then determine if you have to install the ceiling beginning with centered tiles or centered crossbars.



### 2. INSTALL THE ANCHORINGS

Starting in the centre of the room, install anchorings (fig. A) on every joist using the installation template (fig. F).

This template allows you to measure the correct distance between the anchorings as well as between the anchorings and the wall. Anchorings must be installed on EVERY joist. Note that the distance between 2 anchorings on the same main crossbar should never exceed 24". If the joists are not leveled, add furring strips to level.



### 3. INSTALL THE RAILS

Now slide the rails (fig. B) into the main crossbars (fig. D).

You will need about six rails for every main crossbar.

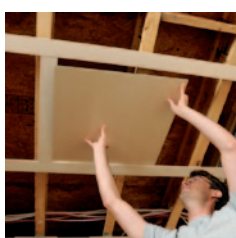
Because the rails have to support the weight of the ceiling, it's important to always use the required number of rails.



### 4. INSTALL THE MAIN CROSSBARS

You can now install the main crossbars (fig. D) by sliding the rails (fig. B) into the anchorings (fig. A) that have been secured to the joists across the entire span of the room.

To avoid any pendulum effects during installation, we recommend that you install the main crossbars followed by 1 or 2 rows of secondary crossbars (fig. C), including any cut crossbars.



### 5. INSTALL THE TILES AND SECONDARY CROSSBARS

Add the panels (fig. E) and secondary crossbars (fig. C) by starting in the centre of the room and alternating on either side.

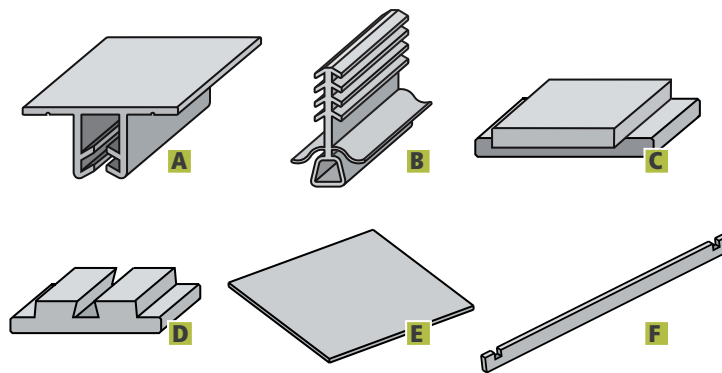


Figure A = Anchoring

Figure B = Rail

Figure C = Secondary crossbar

Figure D = Main crossbar

Figure E = Panel

Figure F = Installation template



### TIPS FOR FINISHING ALONG WALLS

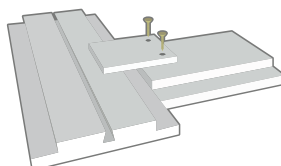
- Secure the last row of main crossbars against the wall.

- Measure the length needed between the last main crossbar and the wall, and cut secondary crossbar accordingly. Ensure a tight fit. This will ensure the entire structure is secure, and will reduce any movements in the components.

- Because you have cut one end of a secondary crossbar, you will need to add a wood peg to this secondary crossbar so that it can be inserted between the final two main crossbars.

### How to make a peg when cutting a secondary crossbar

- Take a 2" x 3" leftover piece of panel and secure it to the unfinished MDF side at the cut end of the secondary crossbar. The extended piece will rest on top of the upper part of the main crossbar.



- Cut the panels that will be installed along the outer edge of the room to size. Avoid cutting the panels to a tight fit, as MDF is a material that expands and contracts with fluctuations in humidity levels. Leaving a small gap between the crossbars and the panel will allow for minor variations in dimensions.

### TIPS FOR INSTALLING RECESSED LIGHTING

- Cut a hole in the centre of the panel to the dimensions of the light.

- Most recessed lights are designed to be installed on a standard suspending ceiling panel or on 1/2" thick gypsum. Since Embassy panels are 1/4" thick, we recommend adding leftover pieces of cut panels (taken from the hole cut for the light) and inserting them under the light's clamps, which will give a combined thickness of 1/2".

Product number	Description	Qty/pkg
P22WHB	White panel, 2' X 2'	4 pcs
P22MAB	Maple panel, 2' X 2'	4 pcs
P22COB	Coffee panel, 2' X 2'	4 pcs
P22GRB	Gray panel, 2' X 2'	4 pcs
M200WHB	White main crossbar	10 pcs
M200MAB	Maple main crossbar	10 pcs
M200COB	Coffee main crossbar	10 pcs
M200GRB	Gray main crossbar	10 pcs
C201WHB	White secondary crossbar	10 pcs
C201MAB	Maple secondary crossbar	10 pcs
C201COB	Coffee secondary crossbar	10 pcs
C201GRB	Gray secondary crossbar	10 pcs
RA20B	Rail and Anchoring	Rail 10 pcs Anchoring 10 pcs
G200	Installation template	1 pc



## WARNING!

**FOR ROOMS WITH A LARGE CEILING SPACE:** The main crossbars should never be installed over a length greater than 35'. If the room is more 35' in length, divide it into two or more sections.

The Embassy ceiling system is not recommended for cathedral ceilings with a pitch of more than 4/12. Contact us for more details.

### STANDARDS AND PROPERTIES

Embassy ceiling has a Class C fire resistance rating, and the same acoustic and soundproofing properties as gypsum.